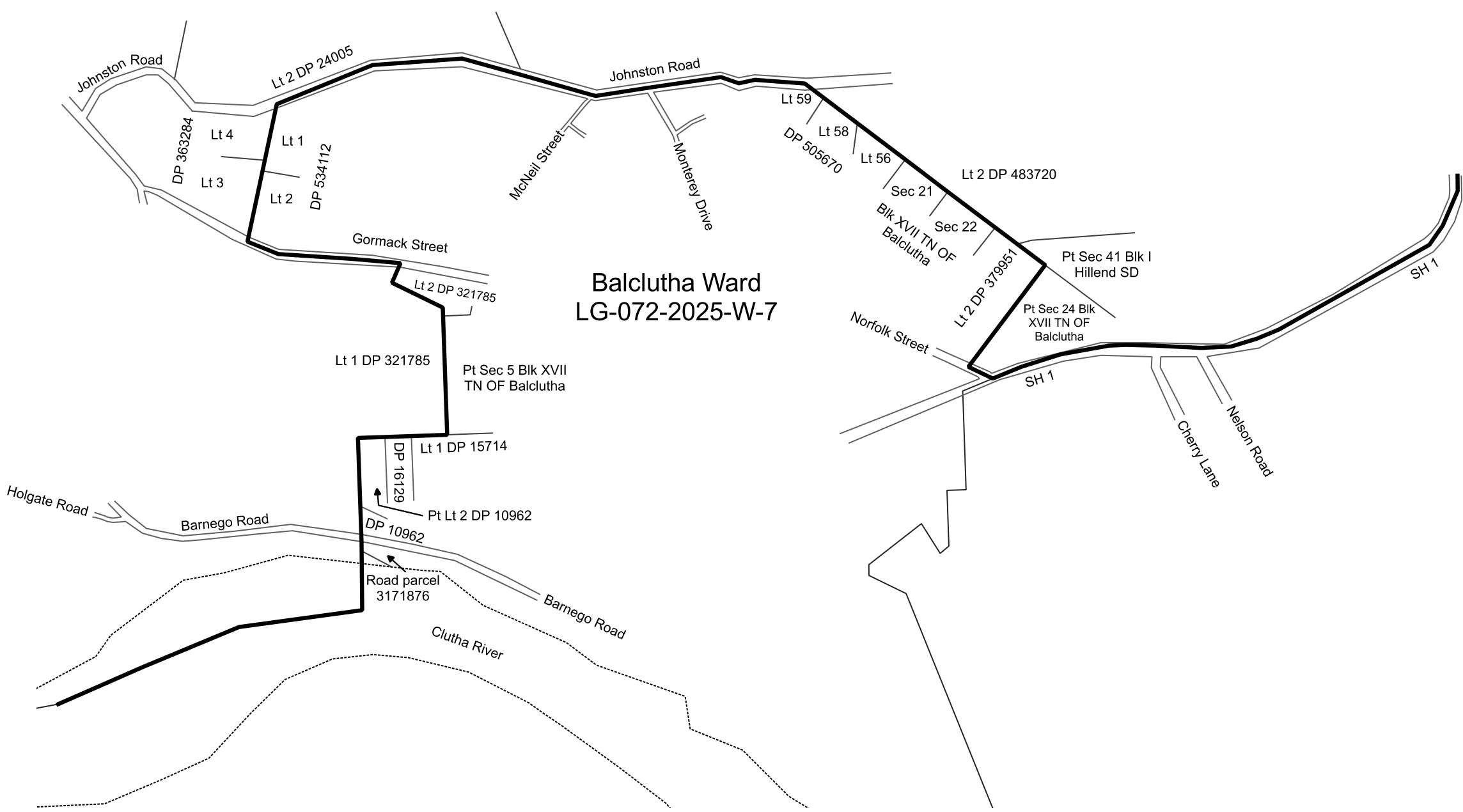


- Notes:
1. Coordinates are in terms of New Zealand Transverse Mercator 2000 (NZTM).
 2. All seaward boundaries follow Mean Low Water Springs but cross the mouths of all rivers, streams, inlets and estuaries except where shown otherwise.
 3. Where a boundary is shown along a river or road it follows the middle line of the physical river or legal road unless otherwise shown.

LAWRENCE-TUAPEKA
WARD



- Notes:
- 1. Coordinates are in terms of New Zealand Transverse Mercator 2000 (NZTM).
 - 2. All seaward boundaries follow Mean Low Water Springs but cross the mouths of all rivers, streams, inlets and estuaries except where shown otherwise.
 - 3. Where a boundary is shown along a river or road it follows the middle line of the physical river or legal road unless otherwise shown.
 - 4. Lt - Lot.

- Notes:
- 1. Coordinates are in terms of New Zealand Transverse Mercator 2000 (NZTM).
 - 2. All seaward boundaries follow Mean Low Water Springs but cross the mouths of all rivers, streams, inlets and estuaries except where shown otherwise.
 - 3. Where a boundary is shown along a river or road it follows the middle line of the physical river or legal road unless otherwise shown.

LAWRENCE-TUAPEKA WARD

Mosgiel-Taieri Ward
SO 430135

Diagram A

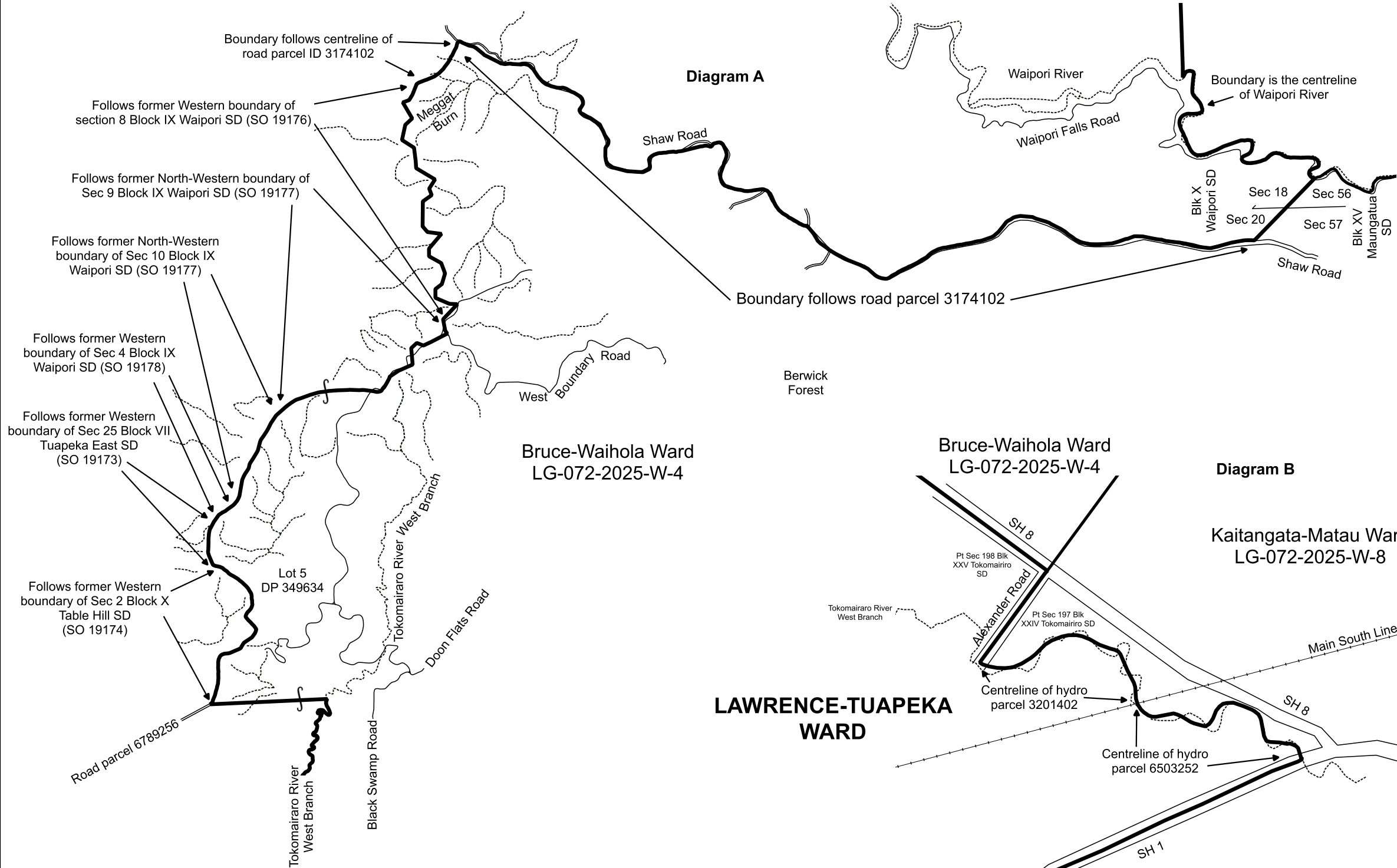
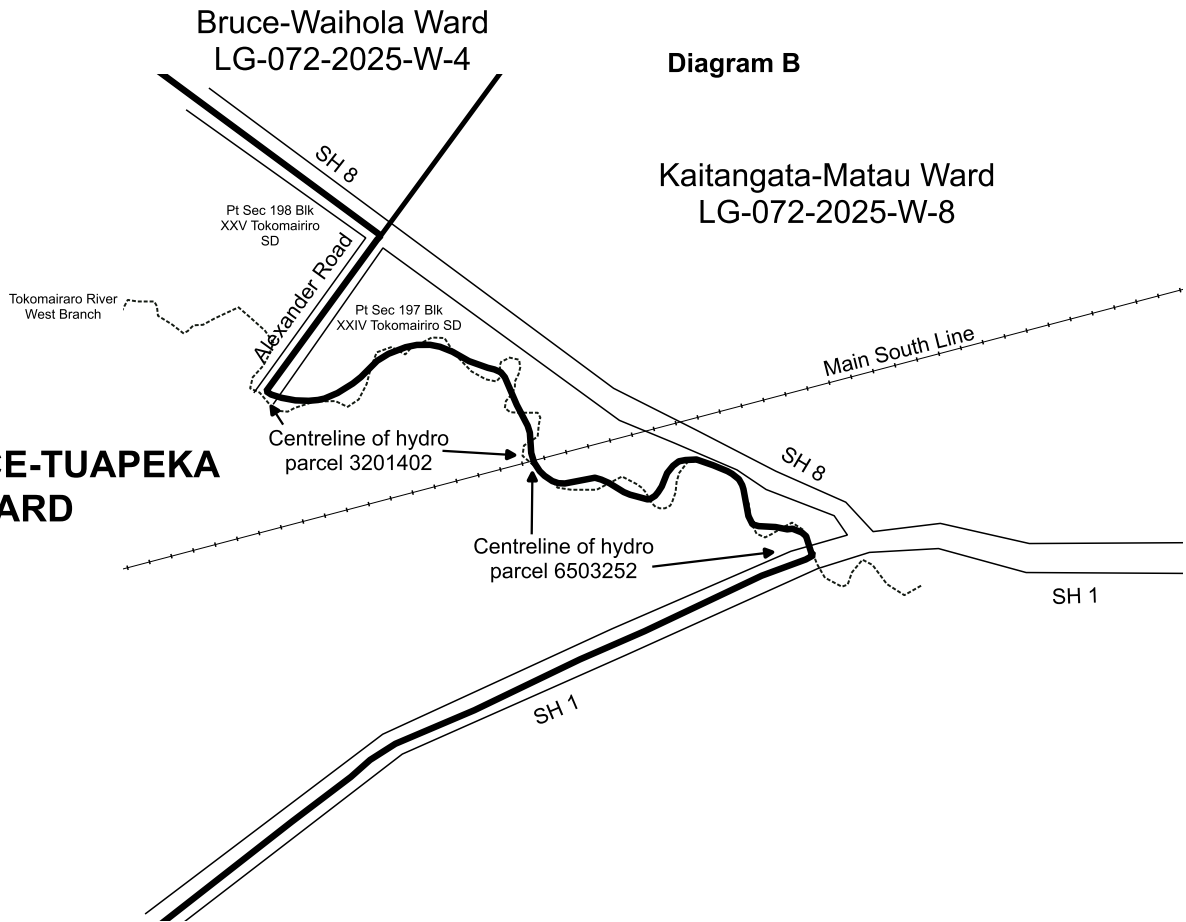


Diagram B

LAWRENCE-TUAPEKA WARD

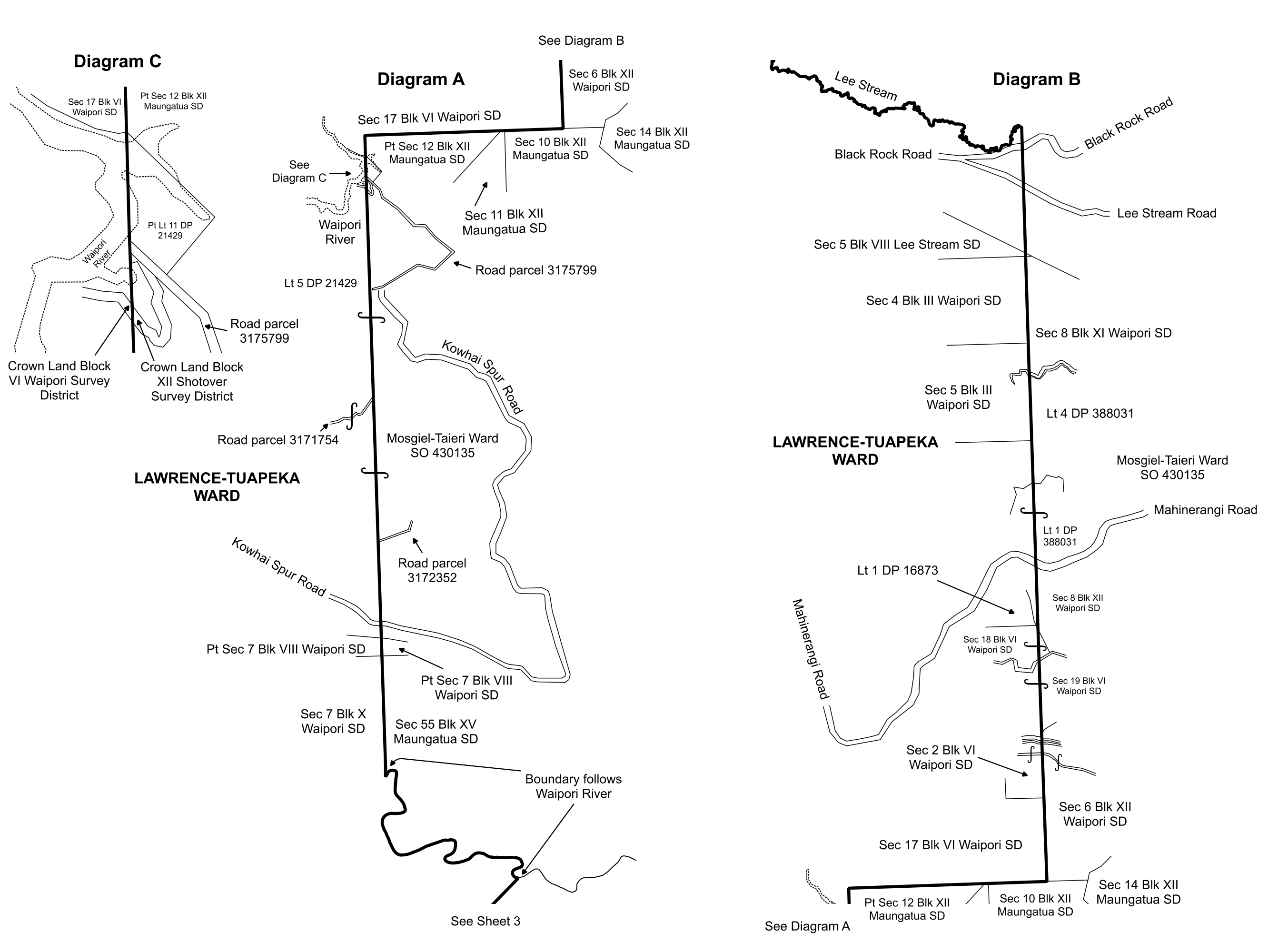


Land District: Otago

CLUTHA DISTRICT
LAWRENCE-TUAPEKA WARD

TERRITORIAL AUTHORITY: Clutha District
Compiled by Independent Election Services Ltd
Not to Scale Date April 2025

LG-072-2025-W-3
Sheet 3 of 5



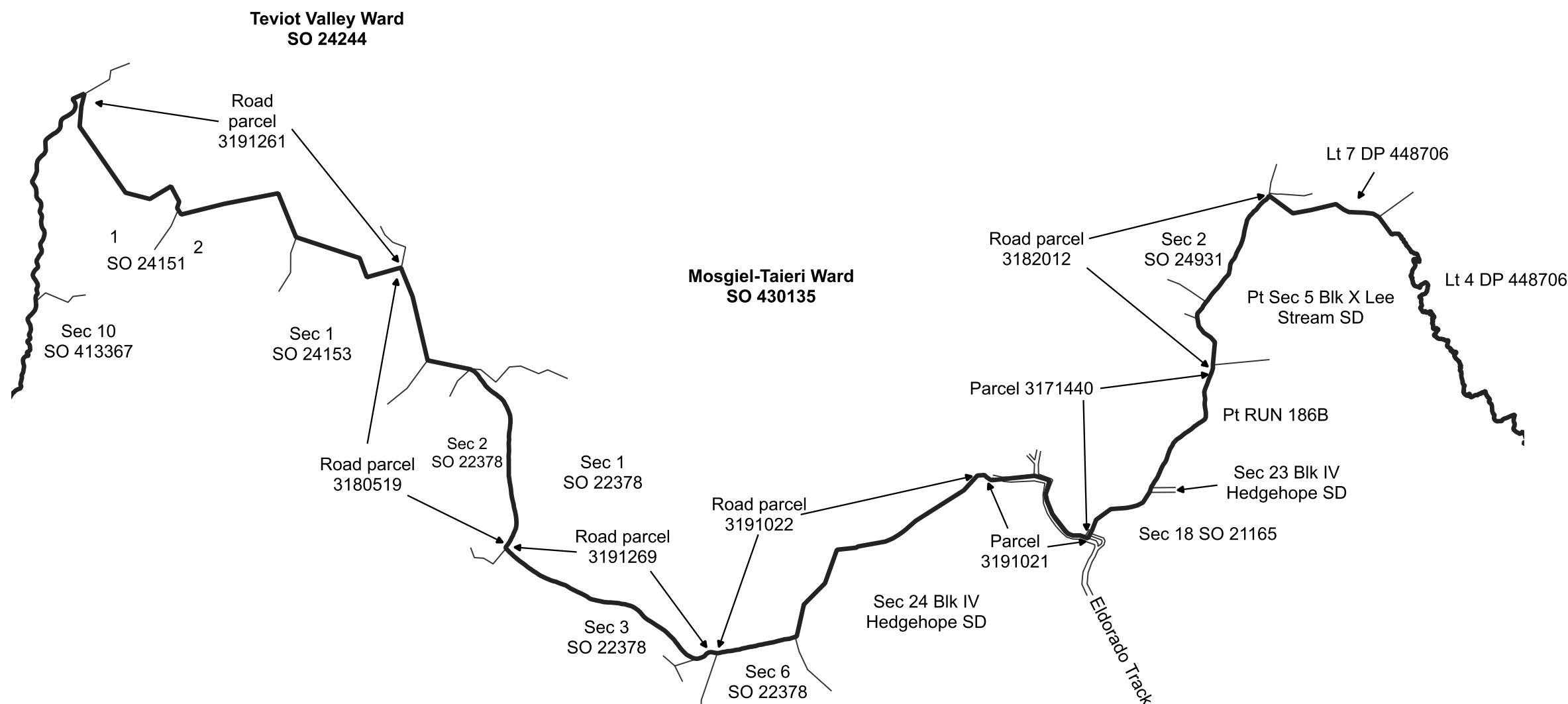
- Notes:
1. Coordinates are in terms of New Zealand Transverse Mercator 2000 (NZTM).
 2. All seaward boundaries follow Mean Low Water Springs but cross the mouths of all rivers, streams, inlets and estuaries except where shown otherwise.
 3. Where a boundary is shown along a river or road it follows the middle line of the physical river or legal road unless otherwise shown.
 4. Lt - Lot.

Land District: Otago

CLUTHA DISTRICT
LAWRENCE-TUAPEKA WARD

TERRITORIAL AUTHORITY: Clutha District
Compiled by Independent Election Services Ltd
Not to Scale Date April 2025

LG-072-2025-W-3
Sheet 4 of 5



LAWRENCE-TUAPEKA WARD

- Notes:
1. Coordinates are in terms of New Zealand Transverse Mercator 2000 (NZTM).
 2. All seaward boundaries follow Mean Low Water Springs but cross the mouths of all rivers, streams, inlets and estuaries except where shown otherwise.
 3. Where a boundary is shown along a river or road it follows the middle line of the physical river or legal road unless otherwise shown.
 4. Lt - Lot.